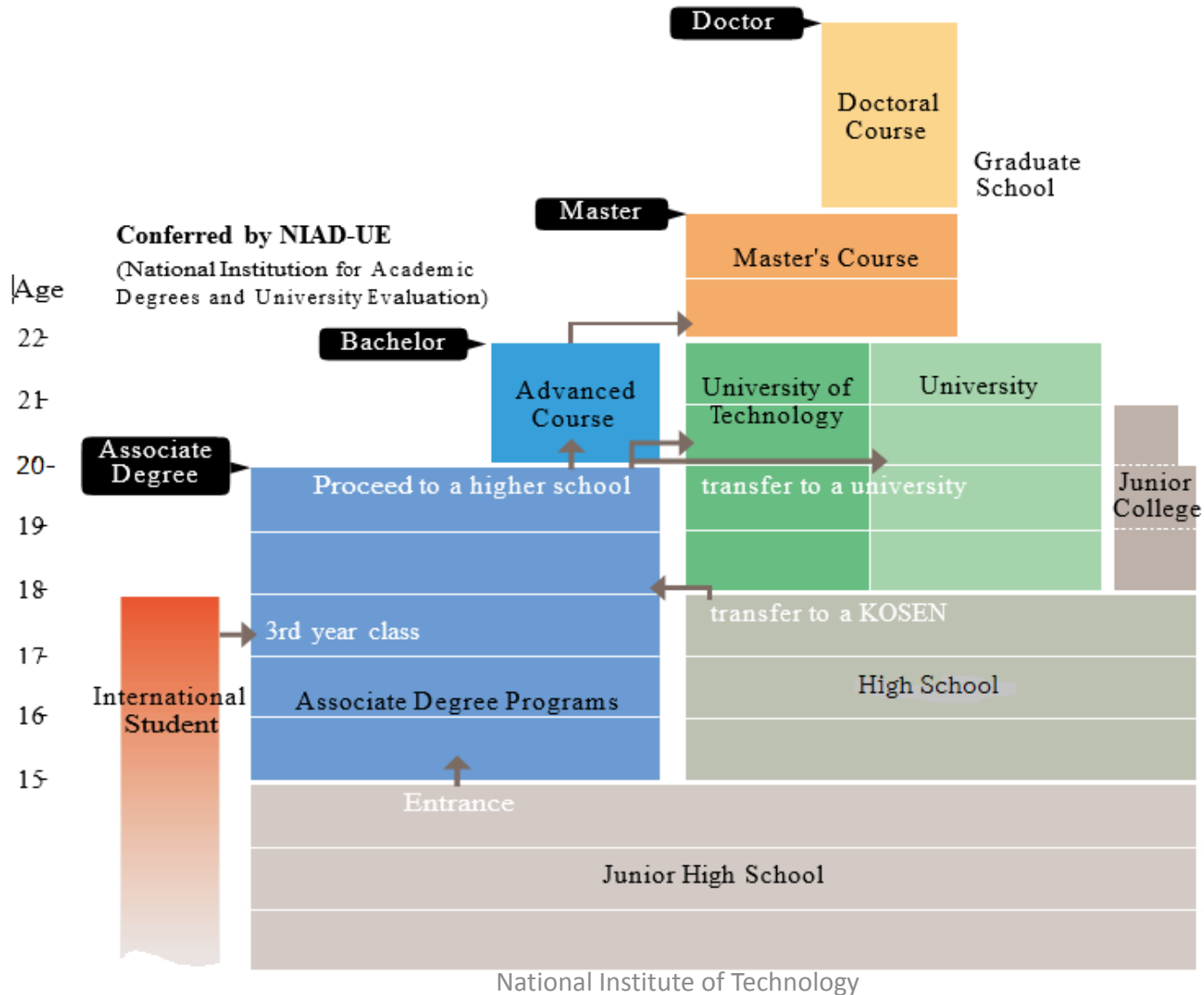


TVET Skills and Demand Supply in Asia : Practices and Innovation

Matsumoto Tsutomu Ph. D.

Director, Japanese-Thai KOSEN Institute of Engineering and Technology, Bangkok

Education Path in Japan



Background of establishing KOSEN

- **1955-1973 High economic growth period**

(the expansion of domestic demand)

- ✓ So many family want to buy TV Set, Frigidaire, Laundry Machine.
- ✓ Designing new model and good production system and so on in all manufacturing company , these situation need s many university level engineer.

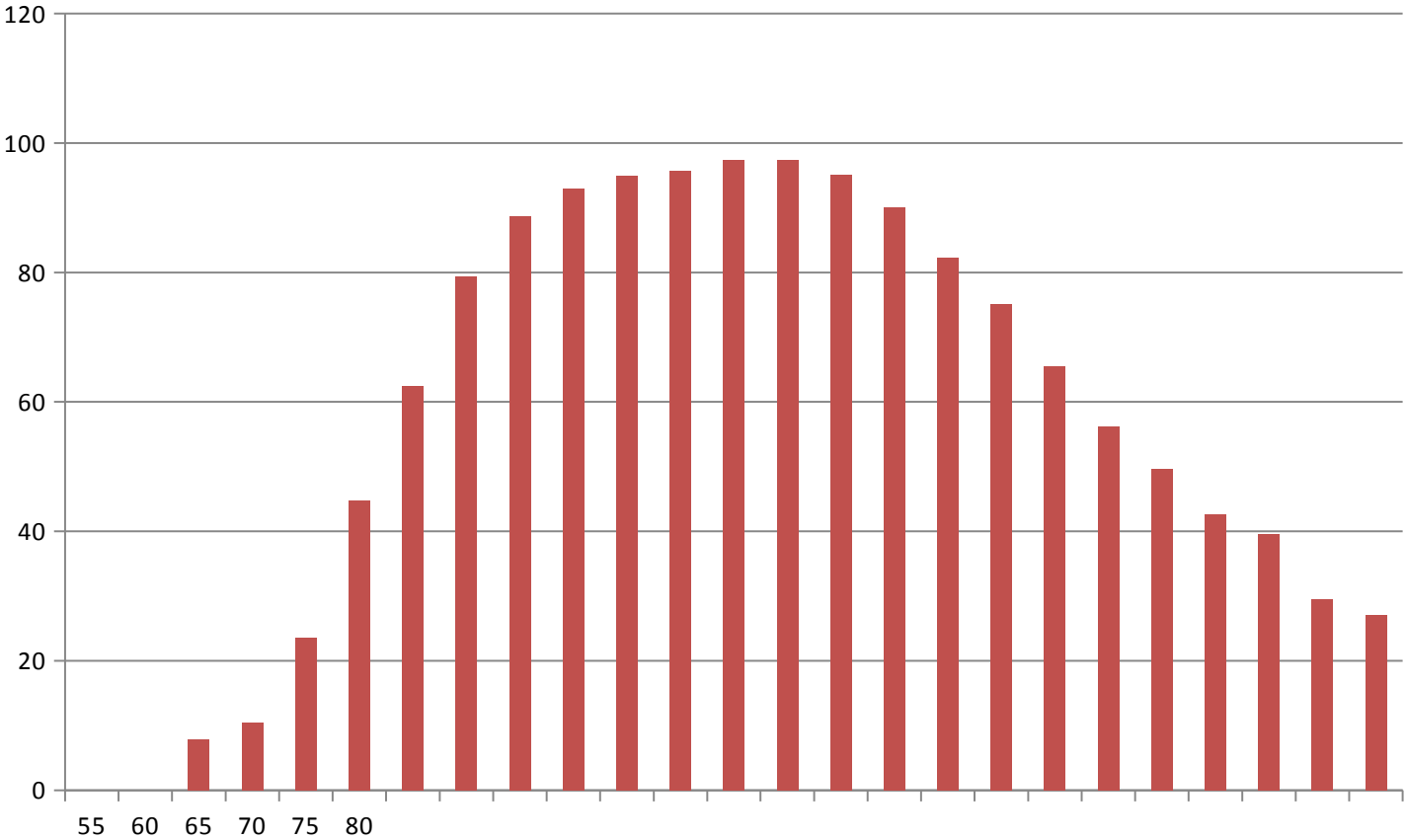
Sales Trend of TV Set

Figure



Monochrome TV Set

Penetration Rate of TV Set



How Japan supports production.

- Big number engineer was in demand wanted.
(Not technician)

Role

Design new product.

Circuit design, Container, assembling, Good component ,
new devices,

Design good efficiency production system

Situation at Faculty of Engineering

Year	Number of Student
1960	92,572
1965	174,655
1970	283,674
1975	333,959
1980	337,767

Easily understand “Deficiency”

Industrial fields needs

- Engineer equivalence graduate university level in academic competency
- Engineer who has practical skill than univ.
- Education duration is shorter than 7 yrs.

Until graduating univ. takes 7 year such as 3+4
5 years idea was created.



KOSEN

**1962, KOSEN
has opened.**

Further Education

- 1967 5 graduates transferred to university
- 1968 12 graduates transferred to university
- 1969 19 graduates transferred to university
- 1970 32 graduates transferred to university

Now around 40% of graduates has taken further education.

University of Technology

- ✓ 1976 Toyohashi and Nagaoka University of Technology have been established.
- ✓ Both of universities receive KOSEN graduates. 360 for Toyohashi and 310 for Nagaoka every year.
- ✓ They have graduate school such as Master Degree and Ph.D.

EST : Advance Course

- 1992
- Two years top up programme
- Bachelor Degree Programme
- Actually NIAD* provides “Degree”.
- In order for the students to obtain bachelor degree, school record should be satisfied by the condition.
- All KOSEN has this programme.

Most of academic staff at KOSEN became PH. D holder for this reason.

* National Institution for academic Degree and Quality Enhancement of Higher Degree

Success Factor

- Japanese culture

People who is making something has been respected by citizen.

- Historical background

Economical situation needed big number engineer. Company treats graduates equality university graduate.

- Start new school system without improving existing school

No bond, unwanted tie ,,,.

- Academic staff has hated loosing university.

(Very competitive academic teacher)

Outcome is same level, or more high as university

- Out come is higher than university.

Thank you for attention
matsumoto@kosen-k.go.jp